



Weill Cornell Medicine

International Medical Student Education



Office of International Medical Student Education

NEWSLETTER

Summer 2026

Notes from the Directors



Over the past six months, the Office of International Medical Student Education (IMSE) has continued to strengthen Weill Cornell Medicine's commitment to preparing globally minded physicians. We celebrated another outstanding cohort of students completing international electives, welcomed visiting international peers, expanded our Global/Local Health Equity curriculum, and recognized exceptional student leadership through our Global Health Distinction program and the Barbara Slifka Global Health Award. These achievements reflect the extraordinary dedication of our faculty mentors, international collaborators, donors, alumni, and students.

This spring also brought several exciting milestones. IMSE showcased our educational programs during the Weill Cornell Medicine LCME accreditation site visit and presented our work to the International Affairs Committee of the Board of Fellows. A memorable highlight was hearing second-year medical student Julia Garaffa describe her transformative summer research experience at Aga Khan University in Karachi, Pakistan, under the mentorship of Dr. Junaid Razzak. Her reflections beautifully illustrated the profound educational value and lasting impact of our authentic international partnerships.

At the same time, our global community continues to navigate a complex landscape. Political instability, armed conflict, natural disasters, and disease outbreaks have created unprecedented challenges for international medical education. Yet, these events reinforce our core belief: global partnership is not a luxury—it is an essential component of advancing health equity.

Our commitment to sustaining and strengthening our bidirectional partnerships remains unwavering. Founded on mutual respect and reciprocity, these relationships remind us that the most pressing health challenges of our time cannot be solved in isolation. Preparing the next generation of physicians requires cultivating cross-cultural curiosity, learning from diverse health systems, and embracing collaboration that transcends borders.

As we look ahead, we remain deeply optimistic. The future of medicine depends on leaders who approach global challenges with humility, creativity, and a willingness to build bridges. By investing in meaningful international education, we hope to inspire physicians who will work collaboratively to address the complex health challenges that unite us all.

Thank you to our students, faculty, international partners, alumni, and generous donors for your unwavering support. Together, we are building a stronger, more connected global medical community.

Laura & Radhika

Co-Directors, Office of International Medical Student Education

Thank you to our Donors

We remain profoundly grateful to all of our donors whose continued generosity and support make these transformative experiences possible. Their support directly enables WCM students to pursue clinical rotations and impactful research across the globe. In Spring 2026, Adam Tucker's international clinical elective was generously supported by the Lynford Family Foundation. Reflecting on his journey, Adam shared that he had an exceptional experience at San Marcos University of Medicine in Peru, noting that it was a unique opportunity to strengthen his capacity for international clinical collaboration. By observing his attending physicians and engaging in frequent discussions with local students and residents, Adam gained a much more nuanced understanding of the cultural norms and expectations surrounding medical care in Peru—an invaluable perspective he will bring forward into his medical career.

Meaningful feedback, such as Adam's, reflect the shared vision of our office and our philanthropic partners. Because the ongoing success and growth of our global health programming rely heavily on donor generosity, we invite you to partner with us in shaping the next generation of global physicians.

To make a donation, please contact: The Office of External Affairs via email at development@med.cornell.edu or call 646-962-9476.

Global Health Curriculum

In close collaboration with our incredible WCM mentors and international partners, five of our rising second-year students are diving into exciting summer projects. Four of these students will be traveling abroad to carry out their research—two to India and two to Tanzania—while one will be conducting their project locally. The cohort will spend 6 to 8 weeks fully embedded within active clinical research teams.

Looking ahead to Spring 2027, the enthusiasm for global health remains strong, with approximately 40% of the Class of 2027 applying for an international clinical elective. Our students are genuinely looking forward to learning from global communities, gaining invaluable insights that will shape their future practice as physicians in an increasingly interconnected world.

Global/ Local Health Equity

Fourteen first-year medical students recently completed the Introduction to Global/Local Health Equity course. This course is offered as an optional program by the Office of International Medical Student Education. This course emphasizes how inequitable health care access drives health disparities among patients in New York City. Through weekly guided readings, students explore the social and structural determinants of health within New York City's diverse patient population. This introduction to health equity happens before students begin their clinical rotations, serving as a valuable precursor to their required fourth-year Health Policy course.

For the course-end reflection session we welcomed back two MS4 students, Adam Tucker and Manish Kumar, both of whom had previously participated in the Global/Local course, to serve as near-peer student preceptors. Adam and Manish did an exceptional job engaging the students within their small groups to explore the themes in more depth and share their own stories of how they were able to increase their own awareness and sensitivity to how social and structural drivers of health impacted the patients they cared for during their training. Students were asked to define global health for themselves reflecting on the evolution of global health itself. The discussion naturally shifted toward the structural challenges of clinical communication, with a sharp focus on the complexities of language barriers. Students candidly talked about the clinical risks that arise when nuances are lost in translation, noting that even professional interpreters can occasionally misinterpret vital medical context or diagnostic subtleties.

Furthermore, looking toward the future of global and local healthcare, the groups discussed the rapidly evolving role of artificial intelligence - whether AI-driven translation platforms could eventually be safely and effectively deployed for real-time medical interpretation. The session highlighted that true competence in global health equity requires not just medical knowledge, but a continuous interrogation of the systems we use to communicate with our most vulnerable patient populations and the flexibility to adapt and advocate for ongoing change.

Ultimately, the session underscored that technology and logistical fixes are only part of the equation; true long-term solutions require deep systemic political and social changes to dismantle communication inequities. The reflection highlighted that achieving global health equity requires not just medical knowledge, but a continuous interrogation of the tools, policies, and societal structures that dictate how we connect with our most vulnerable patient populations.

Special thanks to stellar 4th year students Manish Kumar and Adam Tucker for helping to facilitate this impactful reflection session.

Spring 2026 International Fellows Reception

We are deeply grateful for the continuous support of our donors, which enabled the Office of International Medical Student Education to sponsor twenty-one students for global clinical electives in Spring 2026. These future physicians traveled to diverse partner institutions across the globe—including Austria, Ecuador, England, France, Germany, Peru, Qatar, Scotland, Singapore, Spain, Taiwan, Tanzania, and Thailand—to gain vital international perspective. Following their rotations, they shared their insights on global healthcare delivery through poster presentations at our Spring International Fellows Reception.



Rana Barghout

Residency Match: Johns Hopkins Hospital

Rana's travel to Weill Bugando Medical College (Tanzania) was supported by the Milton B. Rosenbluth Foundation Fellowship.



Elizabeth Bundschuh

Residency Match: Seattle Children's Hospital/University of Washington

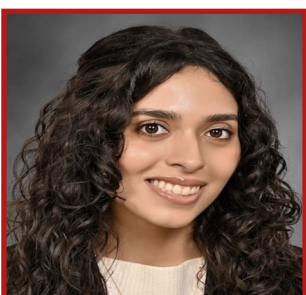
Elizabeth's travel to Ludwig Maximilian University (Germany) was supported by the Lynford Family International Fellows Program.



Jeremy Chang

Residency Match: Stanford Health

Jeremy's travel to National University, Loo Lin School of Medicine of Singapore was supported by the Barbara Slifka International Fellows and the Weill Cornell Medical College



Sarah Chowdhury

Residency Match: NYU Grossman School of Medicine

Sarah's travel to Qatar was supported by WCM-Qatar.

Spring 2026 International Fellows Reception



Callista Clairmont

Residency Match: Kings County Hospital

Callista's travel to Universidad San Francisco de Quito, Ecuador was supported by the Blankenship Family Endowed Fellowship.



Rachel Gropper

Residency Match: University of California San Francisco

Rachel's travel to American Hospital Paris, France was supported by the Joan M. May Scholarship for International Studies.



Sarah Hanif

Residency Match: Boston Children's Hospital

Sarah's travel to Qatar was supported by WCM-Qatar.



Rahma Ibrahim

Residency Match: NYP/Weill Cornell

Rahma's travel to Qatar was supported by WCM-Qatar.



Jacob Jamison

Residency Match: NYP/Weill Cornell

Jacob's travel to Vienna General Hospital, Austria was supported by the Max Kade Foundation and the Lorraine and Ralph Lubin Global Health Scholarship Fund.

Spring 2026 International Fellows Reception



Claire Kenney

Residency Match: Washington University in St. Louis / Barnes-Jewish Hospital

Claire's travel to Qatar was supported by WCM-Qatar.



Manish Kumar

Residency Match: Weill Cornell Medicine

Manish's travel to Universidad Francisco de Vitoria, Spain was supported by the Oliver and Rolf Fein Honorarium.



Joanna Lin

Residency Match: University of Hawai'i

Joanna's travel to National Taiwan University was supported by the Barbara Slifka International Fellows Fund.



Taylor Lis

Residency Match: Children's Hospital of Philadelphia

Taylor's travel to Vienna General Hospital, Austria was supported by the Max Kade Foundation and Class of 1964/Dr. B.H. Kean International Fellowship.



Bala McRae-Posani

Residency Match: Massachusetts General Hospital

Bala's travel to Kings College London, England was supported by the Bryant Barnard, M.D.'62 International Travel Endowment Award.

Spring 2026 International Fellows Reception



Mackenna Mejdell

Residency Match: University of California, San Diego (preliminary medicine year at UCSF St. Mary's)

Mackenna's travel to Vienna General Hospital, Austria was supported by the Max Kade Foundation and Joan M. May



Alex Raghunandan

Residency Match: Weill Cornell Medicine

Alex's travel to American Hospital Paris, France was supported by the Class of 1964/Dr. B.H. Kean International Fellowship.



Adam Tucker

Residency Match: Brigham and Women's Hospital

Adam's travel to San Marcos University of Medicine, Peru was supported by the Lynford Family International Fellows Program.



Nicole Weitzel

Residency Match: Children's Hospital of Philadelphia

Nicole's travel to Royal Hospital for Sick Children, Scotland was supported by the Class of 1964/Dr. B.H. Kean International Fellowship.



Sarah Wie

Residency Match: Montefiore Einstein

Sarah's travel to Chulalongkorn University Faculty of Medicine, Thailand was supported by the Sonam and Daniel Rosberger International Fellowship.

Spring 2026 International Fellows Reception



Sarah Wozniak

Residency Match: University of California, Los Angeles

Sarah's travel to National University, Loo Lin School of Medicine of Singapore was supported by the Barbara Slifka International Fellows Fund.



Helen Xu

Residency Match: Hofstra Northwell School of Medicine

Helen's travel to Chulalongkorn University Faculty of Medicine, Thailand was supported by the Sonam and Daniel Rosberger International Fellowship.



WCM MS4 International Elective Student Testimonial

Joanna Lin

(President of WCMC's Class of 2026)

"Rotating at National Taiwan University has been one of the most important experiences of my medical school career. This rotation has helped me step back and reflect on the way healthcare is provided – and accepted – in the United States. As someone interested in working in global and rural health for the Sino diaspora, this rotation has shed light on how a healthcare system made for and by Asians can benefit patients. In addition to cultural alignment, I've learned about environmentalism in the operating room and placing the financial locus of control in the hands of the patient. The cherry on top of this rotation has been getting to meet with Danny and Welton, two NTU students who have graciously helped me build a language exchange program between our schools, both while they were rotating at NYC and while I was here at NTU! Other students abroad have often been surprised at how much support (structural, financial, emotional) IMSE gives us – other students have to organize their own electives, pay their way, stay with family. I want to acknowledge how special it is to have this level of organization as a medical student!"

Sarah Wozniak

"I completed a 6-week psychiatry rotation at the National University Hospital of Singapore (NUHS) Yong Loo Lin School of Medicine. I rotated at NUHS's general inpatient psychiatry ward and in various outpatient psychiatry clinics, which included specialties such as anxiety, child/adolescent psychiatry, and peripartum psychiatry. I also attended grand rounds, received excellent bedside teaching from house staff and faculty, and had the opportunity to observe repetitive transcranial magnetic stimulation through NUHS's interventional psychiatry clinic. Through these experiences, I learned about clinical care and public health infrastructure in Singapore, which bolstered my commitment to pursuing a career in global mental health and my drive to provide excellent care for diverse populations in the US. I learned about how interdisciplinary teams at NUHS work in a publicly funded universal healthcare system to provide pharmacologic, psychotherapy, social, and interventional treatments for psychiatric conditions. I also learned about differences in psychopathology manifestation and treatment—particularly about how different patients and families prefer to discuss mental health (often more privately than in the US) and the importance of cultural responsiveness and humility when working with Singapore's diverse patient population. Getting to rotate in Singapore, one of the region's leaders in healthcare, will directly support my goal of working in global mental health in Indonesia and applying insights from international work to addressing local mental health disparities in the US."

Global Health Distinction

Warmest congratulations to our Class of 2026 Global Health Distinction recipients: Shannon Arnold, Elizabeth Bundschuh, Claire Kenney, Joanna Lin, Bala McRae-Posani, Mackenna Mejdell, Miranda Metz, Adam Tucker, Sarah Wie, Sarah Wozniak, and Helen Xu! This special honor celebrates their deep-seated dedication and passionate engagement with global health initiatives throughout their time at Weill Cornell. The Office of International Medical Student Education is incredibly grateful for their enthusiastic engagement with our programs. Each of these outstanding individuals has consistently shown remarkable initiative, leadership, and a heartfelt commitment to advancing health equity worldwide.



Shannon Arnold



Elizabeth Bundschuh



Claire Kenney



Joanna Lin



Bala McRae-Posani



Mackenna Mejdell



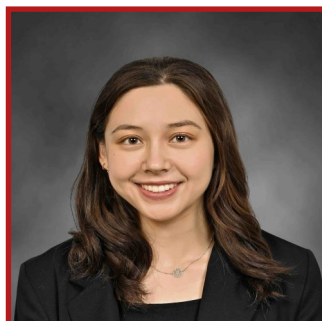
Miranda Metz



Adam Tucker



Sarah Wie



Sarah Wozniak



Helen Xu

Barbara Slifka Global Health Award



The Barbara Slifka Global Health Award was created to honor Barbara Slifka, a wonderful and long-standing supporter of our global health education initiatives. We are thrilled to announce that the 2026 recipient of this award—which includes a cash prize—is Shannon Arnold (Class of 2026), who recently matched into the Neurology residency at Northwestern University Medical Center. This honor celebrates a student who has demonstrated exceptional leadership in global health over the course of their medical school journey. Our warmest congratulations go to Shannon, and we extend our deepest gratitude to the Slifka Foundation for their enduring generosity and support over the years.

Visiting International Student Program

The Visiting International Students Program at Weill Cornell Medicine (WCM) provides a wonderful opportunity for international medical students to immerse themselves in the world-class clinical care offered across our campus and affiliated institutions, including the Hospital for Special Surgery. The program is highly competitive and draws incredible global interest; for the 2025–2026 academic year, we had 74 placements from a pool of 370 student applications. To ensure we welcome the most exceptional candidates, applications are carefully reviewed on a rolling basis.

At the heart of our program is a unique, bidirectional student exchange managed by the Office of International Medical Student Education (IMSE). Through vibrant partnerships spanning 39 international sites across 29 countries, Weill Cornell students are able to pursue clinical electives abroad, while we proudly host visiting medical students from those same partner institutions at WCM and our New York–Presbyterian affiliates. To make our visiting students feel right at home, members of the Weill Cornell student government launched a wonderful peer-led welcoming initiative. This partnership beautifully eases their transition into New York City life and offers a layer of support, helping visiting students integrate into the WCM student community during their elective and establish lasting connections long after they leave.

Visiting International Student Highlight



In May 2026, we were delighted to host Gaayen Ravii Sahgal, a final-year medical student from King's College London, for a month-long rotation through the Glickman Fellow Gynecologic Oncology Elective at NYP/WCM. Reflecting on his experience, Gaayen shared:

"Throughout the rotation, I was fully integrated into the team—pre-rounding, working up patients, formulating management plans, documenting, preparing clinic and tumor board notes, and assisting in the OR with open, laparoscopic, and robotic cases. These responsibilities made me feel like a valued team member and truly motivated me to perform at my best. The consistent feedback from residents, fellows, and attendings pushed me to grow and adapt quickly to a new healthcare system and country.

What stood out the most was the sheer variety of cases and seeing firsthand how different elements of the American healthcare system shape patient care. Navigating a diverse patient population, distinct social factors, complex co-morbidities, and cutting-edge treatments gave me a fresh perspective, contrasting beautifully with my experiences in the UK's National Health Service. Working side-by-side with the residents daily also gave me an honest, ground-level view of what US residency training is truly like.

I am incredibly grateful to my rotation supervisor, Dr. Melissa Frey, for her exceptional mentorship, teaching, and for inviting me to present a literature review to the tumor board. Combining clinical rigor with immense personal and professional fulfillment, these four weeks have been completely unforgettable and formative for my journey as a future physician. A huge thank you to IMSE and the department for this wonderful opportunity!"



Snaps from Spring 2026 International Fellows Reception



**Weill Cornell Medicine
Office of International Medical Student Education
1300 York Avenue
New York, NY 10065**

Under the leadership of the department of Medical Education of Weill Cornell Medicine College, The Office of International Medical Student Education (IMSE) oversees global health education for WCM students and visiting International medical students at WCM.

**Laura Greisman, MD, DTM&H
Radhika Sundararajan, MD, PhD
Savita Birbal, MA**