



Weill Cornell Medicine


International Medical
Student Education



The Office of
International Medical
Student Education



NEWSLETTER
Winter 2023



Notes From the Directors

Happy Holidays from the Office of International Medical Student Education (IMSE)!

As the year comes to a close, we are grateful to reflect on the amazing work of our Weill Cornell faculty and students in creating an engaged Global Health community. Over the past few months we have seen the damaging impact of climate change, natural disasters and humanitarian crises around the world that emphasize our interconnectedness as global citizens and underscore the need to

train the next generation of globally minded physician leaders to tackle these issues. Through offering a strong foundational curriculum and international clinical and research experiences, our Office hopes to provide the tools and resources needed for our students to succeed. We hope that our robust program of bidirectional student exchanges will continue to promote cross-cultural exchange and cultural humility and agility in all our students. This year we continue to grow our programs with international partnerships in Ecuador and Indonesia and note that student exchange volumes that have returned to pre-COVID levels!

In October, IMSE hosted the Fall International Fellows Reception to celebrate and share the work of the ten Weill Cornell Medical students who participated in mentored international summer projects in India, Mexico, Tanzania and Thailand. Dr. Mickey Stewart, the Senior Dean of the Office of International Affairs and Affiliations and Dr. Jyoti Mathad, Associate Professor of Medicine & Assistant Professor of Medicine in OB/GYN, provided opening remarks at the reception. They reflected on IMSE's proven record and ongoing commitment to providing students with high quality international education, experiential learning, and faculty mentorship. Our Fellows Reception continues to demonstrate the strength and breadth of Weill Cornell Medicine's Global Health community.

Our pre-departure workshop for the fourth-year medical students who will be participating in an international clinical elective in Spring 2024 was held in late November. Nineteen students will travel abroad to participate in a clinical elective in early 2024 with rotations in Australia, Austria, Costa Rica, South Korea, London, Paris, Peru, Singapore, Scotland, Spain, Taiwan, Thailand, and Turkey. We are also thrilled that three of our fourth-year medical students will be participating in clinical electives at Weill Cornell Medicine Qatar campus. Stay tuned for our Spring International Fellows Reception in May 2024, where returning students will report back on their experiences!

Special and continued thanks to our donors for their generosity whether in the form of fellowships, endowments, or stipends. Your support allows our Weill Cornell Students to participate in these world class global health opportunities.

The first half of the academic year has been wonderful thanks to our institutional and international partners, our amazing staff, and students. Wishing you all a safe, happy, and healthy holiday season! We are looking forward to connecting in 2024!

Laura & Radhika

Laura Greisman, MD, DTM&H

Co-Director, Office of International Medical Student Education
Assistant Professor of Clinical Medicine
Dept. of Medicine, Section of Hospital Medicine

Radhika Sundararajan, MD, PhD

Co-Director, Office of International Medical Student Education
Assistant Professor of Medicine
Dept. of Emergency Medicine & Center for Global Health

We continue to offer our Global Health Grand Rounds virtually as part of our initiative to engage partners around the world. These lectures are very well attended by our WCM students and faculty as well as our partners, especially our partners in Brazil.



The first Grand Rounds for the 2023 -2024 Academic Year was led by Dr. Joseph Shin, Assistant Professor of Medicine, who presented on migration and health. His talk highlighted various causes for migration and how these causes may affect health. Pre-migration conditions affect post-migration health and may even increase health risks and have negative health outcomes. He also advised us that we must caution ourselves, more specifically, understand the intent when we use certain words to describe immigrants. Perception plays a role especially since a lot of words we currently use to describe immigrant holds a lot of biases.



Oladele Ogunseitan, Ph.D., MPH



Joseph Shin, M.D.

The second session was led by Dr. Oladele Ogunseitan, Distinguished Professor of Population Health & Disease Prevention at University of California, Irvine. Dr. Ogunseitan spoke about the concept of One Health and the environment. He discussed why One health is important and necessary, and by having a collaborative and multidisciplinary approach it can enable us to predict disease outbreaks.

We look forward to future Grand Rounds talk by speakers from several of our partner institutions. Scheduled lectures and the link to recorded lectures can be found on IMSE's website under the Events Page.



**Summer
2023
International
Fellows**

Ten students from the class of 2026 participated in an international mentored research project during summer of 2023. These projects took place in India, Mexico, Tanzania and Thailand under the mentorship of Drs. Betania Allen-Leigh, Puja Chebrolu, Jennifer Downs, Thanakorn Jirasevijinda, Apicahi Khongphattyothin, Dominic Konadu-Yeboah, Jyoti Mathad, Robert Peck, Khanh Pham, Radhika Sundararajan, Niharika Thakkar, and Timothy Wilkin.

In October 2023, these students presented their findings at IMSE's Fall International Summer Fellows Reception. Many thanks to our international faculty mentors for helping to facilitate the placement of these students and for providing supervision of their projects. Students from this past summer were funded by the Barbara Slifka International Fellows and the Dr. Robert C. and Veronica Atkins Foundation Curriculum. Thank you to our donors for their continued support!



Shannon Arnold
Mwanza, Tanzania
Mentor(s):

Jennifer Downs, MD, MSc, PhD
Associate Professor of Medicine
Associate Professor of Medicine in Microbiology and Immunology, WCM

Khanh Pham, MD
Instructor in Medicine, WCM

Funding: Barbara Slifka International Fellows



Elizabeth Bundschuh
Bangkok, Thailand
Mentor(s):

Apicahi Khongphattyothin, MD
Professor of Pediatrics, Chulalongkorn University

Thanakorn Jirasevijinda, MD
Professor of Teaching in Pediatrics, WCM

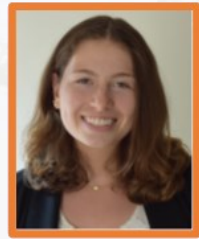
Funding: Barbara Slifka International Fellows



Mackenna Mejdell
Mwanza, Tanzania
Mentor(s):

Jennifer Downs, MD, MSc, PhD
Associate Professor of Medicine
Associate Professor of Medicine in Microbiology and Immunology, WCM

Funding: Barbara Slifka International Fellows



Miranda Metz
Mwanza, Tanzania
Mentor(s):

Jennifer Downs, MD, MSc, PhD
Associate Professor of Medicine
Associate Professor of Medicine in Microbiology and Immunology, WCM

Robert Peck, MD, PhD
Associate Professor of Medicine
Associate Professor of Pediatrics, WCM

Funding: Dr. Robert C. and Veronica Atkins Foundation Curriculum



Kingsley Osei-Karikari
Ghana, Africa

Mentor(s):

Mark Brouillette, MD
Clinical Assistant Professor of Anesthesiology, HSS

Andrew Grose, MD, MSc
Assistant Professor of Orthopaedic Surgery, HSS

Dominic Konadu-Yeboah, MBChB, MPH
Attending Orthopedic Surgeon, KATH

Niharika Thakkar, PhD
Director of Global Health and Education Research, HSS

Funding: Barbara Slifka International Fellows



Nicole Palmer
Pune, India

Mentor(s):

Puja Chebrolu, MD
Assistant Professor of Medicine

Jyoti Mathad, MD, MS,
Assistant Professor of Medicine
Assistant Professor of Medicine in OB/GYN, WCM

Radhika Sundararajan, MD, PhD
Co-Director, International Medical Student Education
Assistant Professor, Dept. of Emergency Medicine & Center for GH, WCM

Funding: Barbara Slifka International Fellows



Juliet Ryan
Bangkok, Thailand

Mentor(s):

Thanakorn Jirasevijinda, MD
Professor of Teaching in Pediatrics, WCM

Funding: Barbara Slifka International Fellows



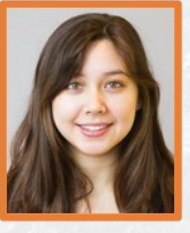
Adam Tucker
Puebla, Mexico

Mentor(s):

Timothy Wilkin, MD, MPH
Assistant Dean for Clinical Compliance
Professor of Medicine, WCM

Betania Allen-Leigh, MA, PhD
Professor – Researcher, INPH - Mexico

Funding: Dr. Robert C. and Veronica Atkins Foundation Curriculum



Sarah Wozniak
Pune, India

Mentor(s):

Puja Chebrolu, MD,
Assistant Professor of Medicine, WCM

Jyoti Mathad, MD, MS,
Assistant Professor of Medicine
Assistant Professor of Medicine in OB/GYN, WCM

Funding: Barbara Slifka International Fellows



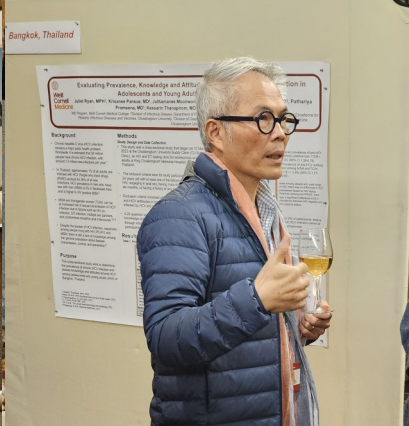
Helen Xu
Bangkok, Thailand

Mentor(s):

Thanakorn Jirasevijinda, MD
Professor of Teaching in Pediatrics, WCM

Funding: Barbara Slifka International Fellows

Fall
International
Fellows
Reception



The Class of 2027 has shown great interest and participation in the Fall 2023 iteration of IMSE's Introduction to Global Health Seminar Series. Forty percent of the MS1 class attended at least one session.

Topics for this 9-week series included: the global burden of disease, non-communicable diseases in low- and middle-income countries, settler colonialism as a social determinant of health, health care systems and medical pluralism, colonization / decolonization in Global Health, burn injury and care in a low-resource setting, the right to sight, women's health issues in LMICs, global health infectious diseases, and global health issues facing children.

We continue to present this lecture series in an interactive format where students were asked to work in groups on specific case-based questions related to the topic presented. The case-based learning approach gives students an opportunity to see theory in practice while keeping them engaged to develop analytic and collaborative skills. It is a chance to connect students with real-life data allowing them to articulate issues while acquiring deep knowledge in the process.

Dr. Thanakorn Jirasevijinda, Professor of Pediatrics, used the "Jeopardy" format to get the students even more engaged. For the past 3 years since surveys for individual lectures were collected, this session was one of the highest rated among the students.

Students enjoyed discussing real-world cases which presented an opportunity to think about how global health interventions and programs can be done differently. It was a joy to see the impressive level of in-person engagement as students worked together in small groups to discuss interactive cases introduced by a diverse selection of renowned global health faculty educators.

Many thanks to our lecturers this year: Drs. Hau, Gallagher, Jirasevijinda, Mathad, Peck, Scales, Sun, & Sundararajan, and Ms. Sadigh. We appreciate them for taking the time out of their busy schedules to once again making this year's Introduction to Global Health Seminar Series a success.

Global Health Seminar Series

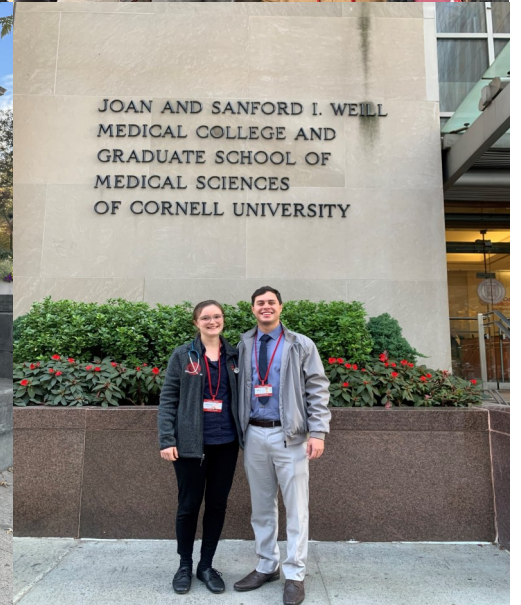


Visiting International Students Program

The Visiting International Student Program is a way for international medical students to obtain exposure to world-class medical care practice provided at Weill Cornell-NY Presbyterian Hospital. We are delighted to host students each month from around the globe – both from our long-standing partner schools as well as from international independent students. During the Fall 2023 semester 34 visiting international students completed electives in Anesthesia, Cardio Thoracic Surgery, Emergency Medicine, Internal Medicine at NYPH, NYP Queens and Brooklyn Methodist Hospital in Obstetrics, Ophthalmology, Psychiatry, and Urology.

We are so grateful for the support of clinical departments, coordinators and the Registrar's Office who assist from placement to processing and registering these international students. Students have provided outstanding feedback on these clinical electives: "attending and residents...were instrumental in my learning experience. They provided invaluable guidance in interpreting complex cases." Another stated that they "loved working on collaborative teams of attendings, fellows, and residents."

We continue to work closely with the Office of International Affairs and Affiliations in building new international partnerships, in efforts to expand WCMC's tradition of sustainable and equitable bilateral student exchange.





From the Office of International Medical Student Education, have the most joyous holiday season and a happy, healthy and prosperous new year!



Weill Cornell Medicine

Office of International Medical Student Education

1300 York Avenue
New York, NY 10065

Laura Greisman, MD, DTM&H
Radhika Sundararajan, MD, PhD

Savita Birbal, MA
Dianne Young, MPH



Follow us

@WeillCornellIGH

Thank you to our Donors for their continued support.

To make a donation, please contact: External Affairs at development@med.cornell.edu or 646-962-9476

Under the leadership of Weill Cornell Medical Education, The Office of International Medical Student Education (IMSE) oversees global health education for WCM students and visiting International medical students at WCM.

[Click here to visit us in the web](#)